

Pressure regulator, Series 651

- G 1/8 G 1/4

- Qn = 800-2060 l/min



Parts

Working pressure min./max.

Ambient temperature min./max.

Medium temperature min./max.

Medium

Regulator type

Adjustment range min./max.

Hysteresis

Weight

Pressure regulator

0 ... 16 bar

-20 ... 50 °C

-20 ... 50 °C

Extended temperature range min./max.
(optional) -40 °C ... 80 °C

Compressed air Neutral gases

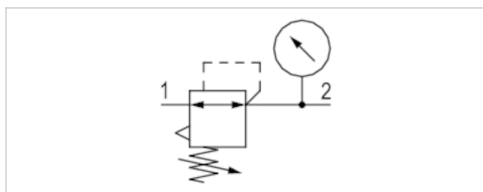
Can be assembled into blocks

0,5 ... 10 bar

0.3 bar

0,22 kg

The delivered product varies from that in the illustration. See the drawing for an exact description.



Technical data

Part No.	Port	Flow
		Qn
G651AR001GA00H0	G 1/8	800 l/min
G651AR001PA00H0	G 1/8	800 l/min
G651AR001QA00H0	G 1/8	800 l/min
G651AR002GA00H0	G 1/4	2060 l/min
G651AR002PA00H0	G 1/4	2060 l/min
G651AR002QA00H0	G 1/4	2060 l/min

Part No.	Pressure gauge
G651AR001GA00H0	With integrated pressure gauge
G651AR001PA00H0	Transition plate for assembling a pressure gauge with connection thread G 1/8
G651AR001QA00H0	with pressure gauge
G651AR002GA00H0	With integrated pressure gauge
G651AR002PA00H0	Transition plate for assembling a pressure gauge with connection thread G 1/8
G651AR002QA00H0	with pressure gauge

Nominal flow Qn at p1= 10 bar , p2= 6.3 bar and Δp = 1 bar

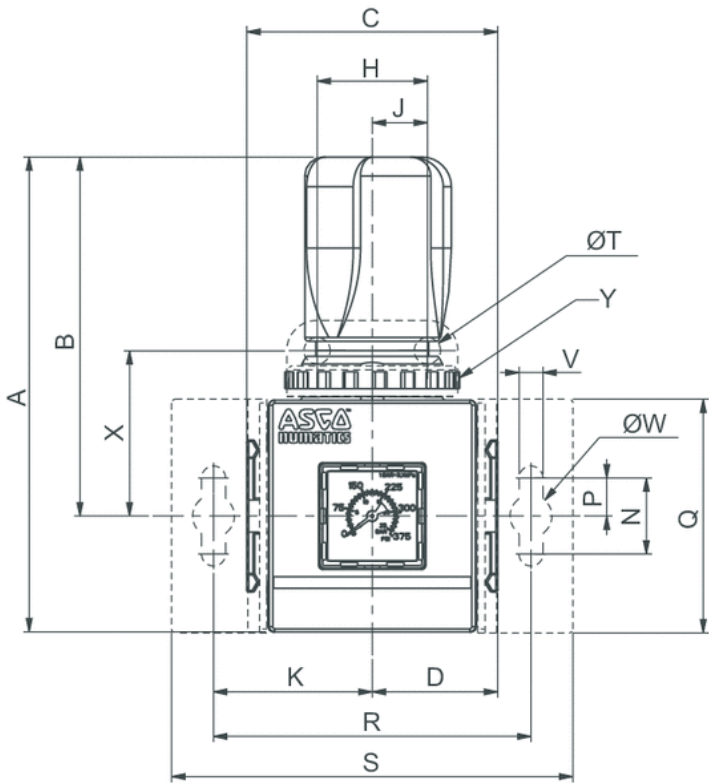
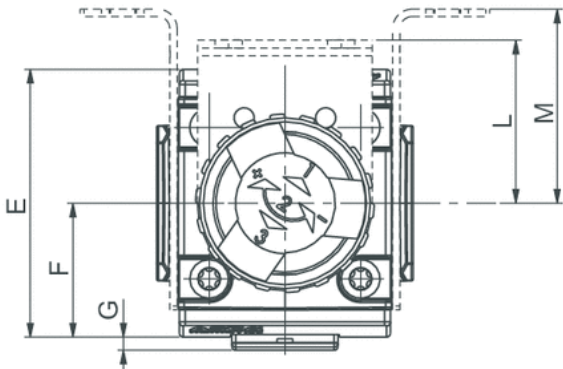
Technical information

Material	
Housing	Aluminum
Front plate	Polyamide

Material		
Seals	Nitrile butadiene rubber	

Dimensions

Dimensions

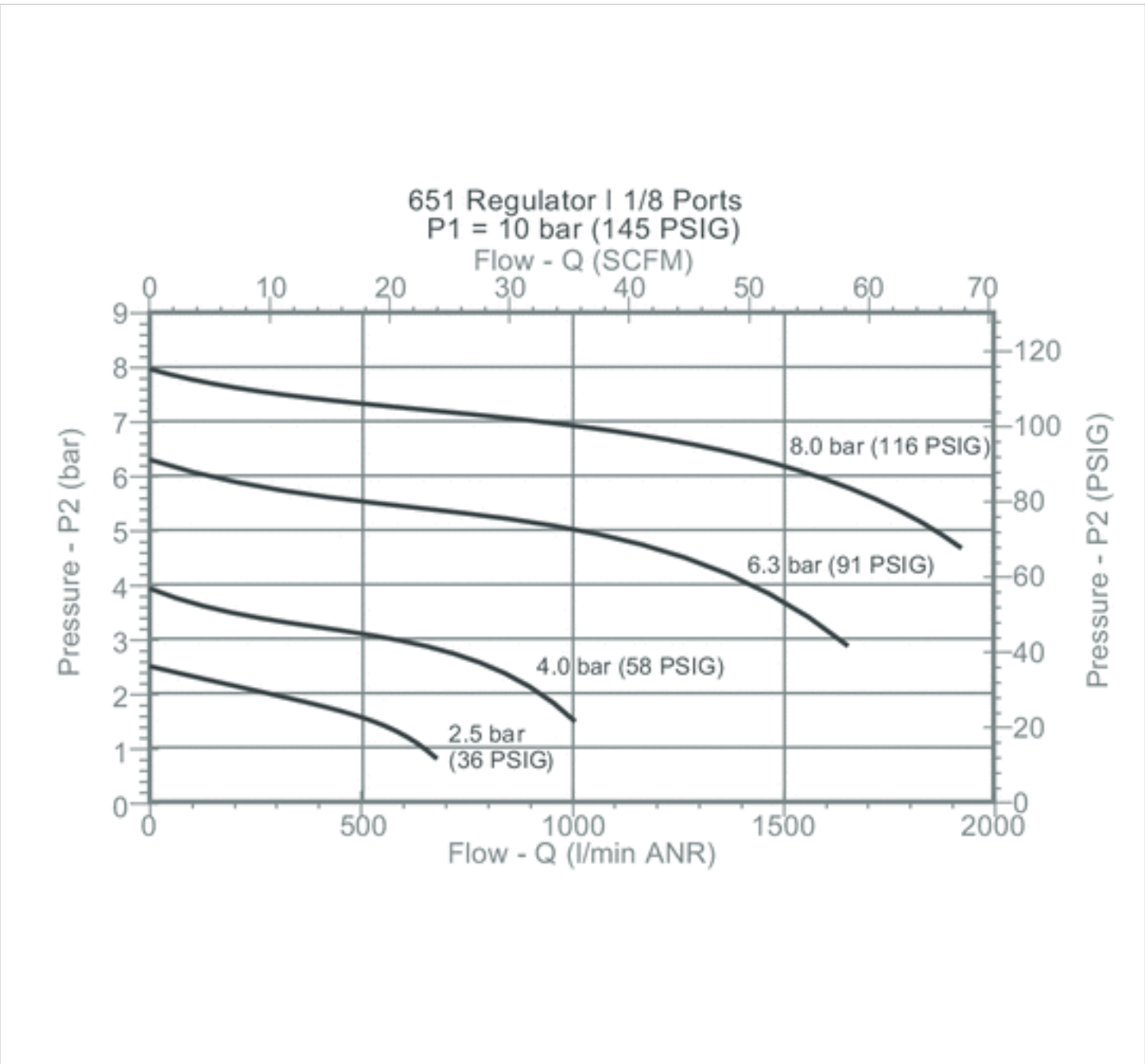


Dimensions

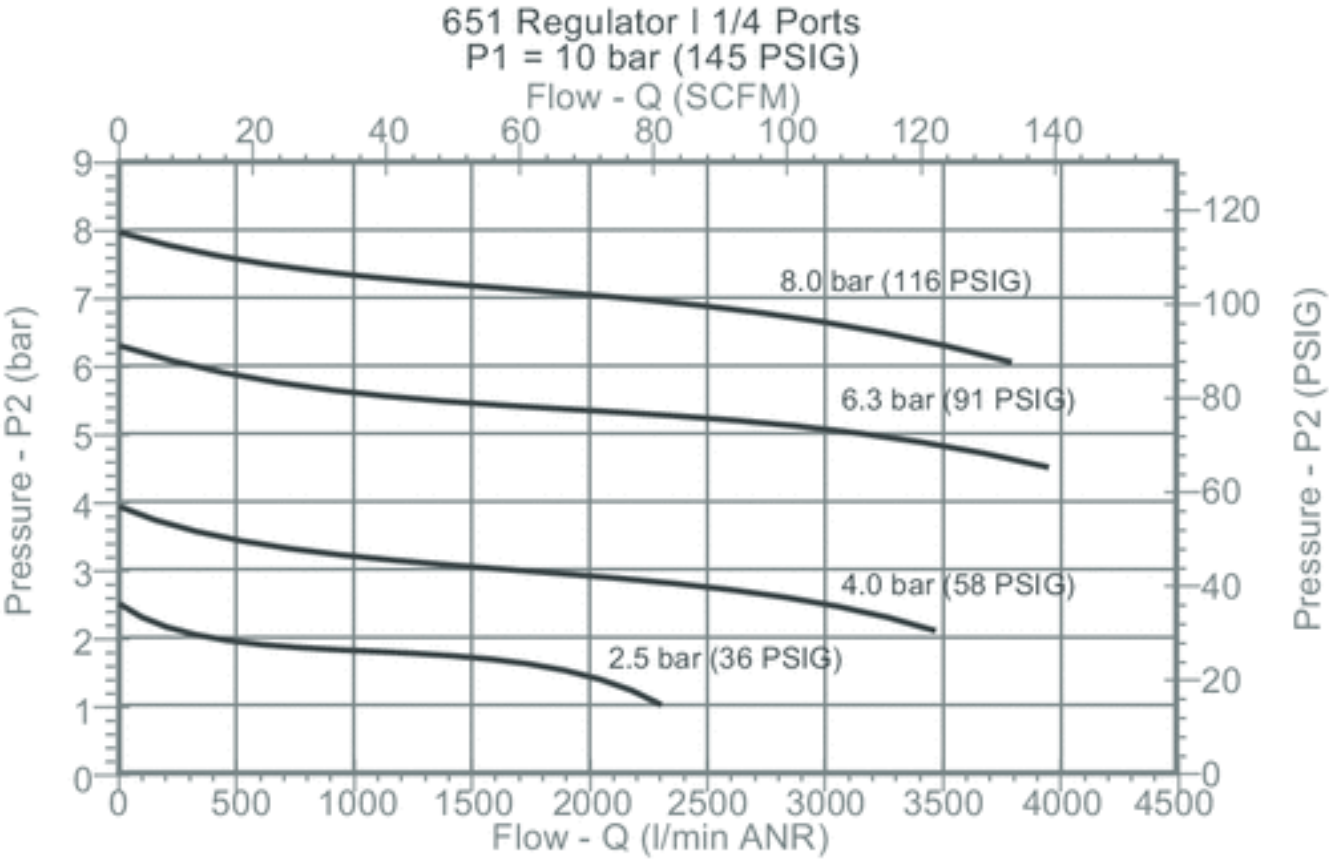
Series	A	B	C	D	E	F	G	H	J	K	L	M	N	P	Q	R	S	T	V	W	X	Y
651	103	77.5	50	25	58	29	3,4	29	14,5	35	42	44,5	20	10	50	70	92	7	6,3	11	39,1	M30x2

Diagrams

Flow diagram, G 1/8

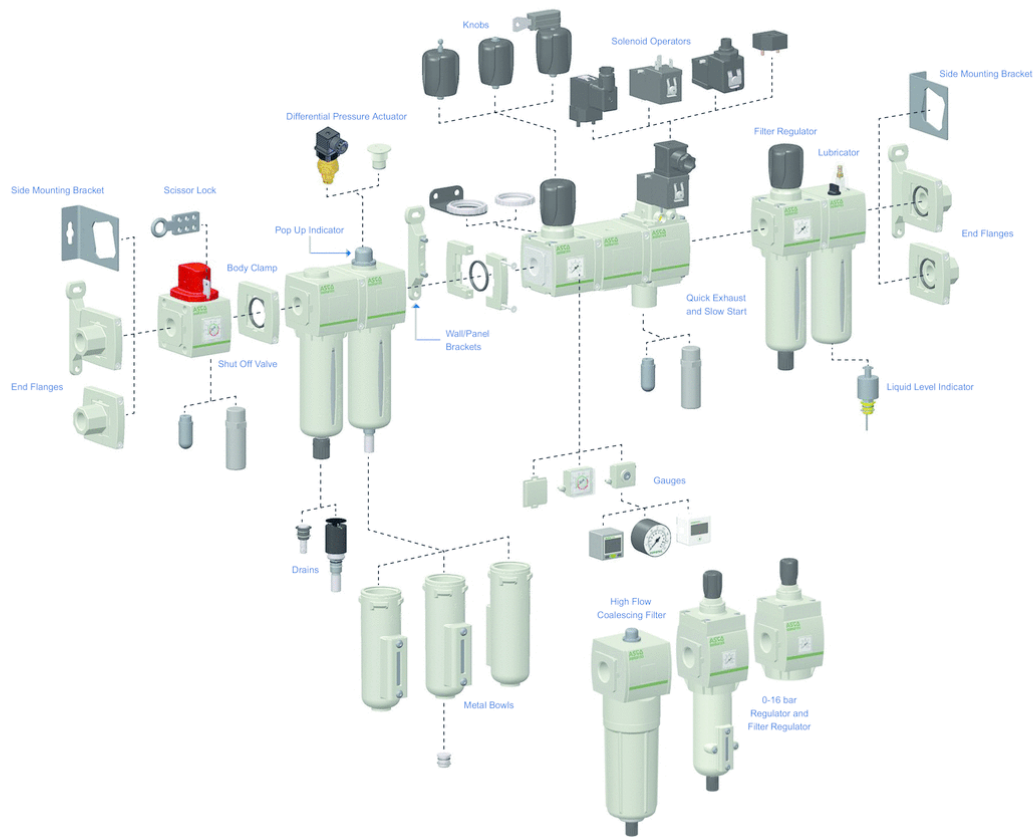


Flow diagram, C 1/4



Accessories overview

Accessories overview



Ordering information


Thread connection
 G = ISO 228/1-G ⁽¹⁾
 8 = NPTF

Product series
 651
 652
 653

Revision letter
 A

Product type
 K = Regulator "Quick Relief Option" (652 only)
 R = Regulator ⁽²⁾
 W = Pilot Operated Regulator (652 only)

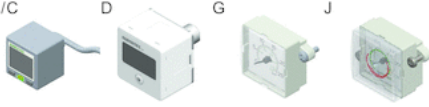
K/R **W**



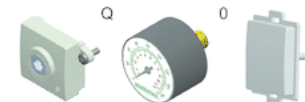
Port size
 1 = 1/8 (651 Series)
 2 = 1/4 (651 or 652 Series)
 3 = 3/8 (652 Series)
 4 = 1/2 (652 Series)
 5 = 3/4 (653 Series)
 6 = 1 (653 Series)

Gauge type
 B = Digital pressure switch - PNP
 C = Digital pressure switch - NPN
 D = Digital gauge
 G = Low profile integrated gauge bar/PSI
 J = Low profile integrated gauge bar/PSI with pressure range indicators
 Q = Round gauge bar/PSI
 0 = No gauge port
 P = Port Plate Rc 1/8


B/C **D** **G** **J**




P **Q** **0**



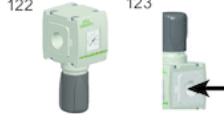
Pressure range
 D = 0,2..3 bar
 H = 0,5..10 bar
 N = 0,5..16 bar (653 only)

Options ⁽³⁾
 A00 = Without option
 101 = Side Mounting Brackets
 102 = Panel Nut (651 or 652)
 103 = Tamper resistant
 104 = Key lockable
 105 = High temperature (+80°C)
 106 = Low temperature (-40°C) ⁽⁴⁾
 109 = FPM seals
 113 = Stainless steel fasteners
 114 = Provision for key lock
 117 = ATEX zones 1-21 
 119 = Panel Bracket with Panel Nut (651 or 652)
 121 = Non-relieving
 122 = Bottom oriented pressure adjustment
 123 = Gauge type mounted for right-to-left flow
 124 = CUTR Certification (EAC)
 125 = CUTR Ex
 202 = 105 + 109
 2A9 = 105 + 106

101 **103** **104** **119**



122 **123**



⁽¹⁾ Conforms to ISO standards 1179-1.

⁽²⁾ Relieving standard; use option 121 for non-relieving

⁽³⁾ If multiple options are required, please use the on-line CAD configurator on the website to generate the part number (www.asco.com).

⁽⁴⁾ Compressed air must be dry enough so no ice formation is present on the product.

Efficient pneumatic solutions, our program: cylinders and drives, valves and valve systems, air supply management



Visit us: [Emerson.com/Aventics](https://www.emerson.com/Aventics)

Your local contact: [Emerson.com/contactus](https://www.emerson.com/contactus)



Emerson.com



Facebook.com/EmersonAutomationSolutions



LinkedIn.com/company/Emerson-Automation-Solutions



Twitter.com/EMR_Automation

An example configuration is depicted on the title page. The delivered product may thus vary from that in the illustration. Subject to change. This Document, as well as the data, specifications and other information set forth in it, are the exclusive property of AVENTICS GmbH. It may not be reproduced or given to third parties without its consent. Only use the AVENTICS products shown in industrial applications. Read the product documentation completely and carefully before using the product. Observe the applicable regulations and laws of the respective country. When integrating the product into applications, note the system manufacturer's specifications for safe use of the product. The data specified only serve to describe the product. No statements concerning a certain condition or suitability for a certain application can be derived from our information. The information given does not release the user from the obligation of own judgement and verification. It must be remembered that the products are subject to a natural process of wear and aging.

The Emerson logo is a trademark and service mark of Emerson Electric Co. Brand logotype are registered trademarks of one of the Emerson family of companies. All other marks are the property of their respective owners. © 2020 Emerson Electric Co. All rights reserved.
2020-12



CONSIDER IT SOLVED™